

# NEW INDUSTRIAL BUILDING FOR SALE/LEASE

359 E. Parkcenter Circle South • San Bernardino

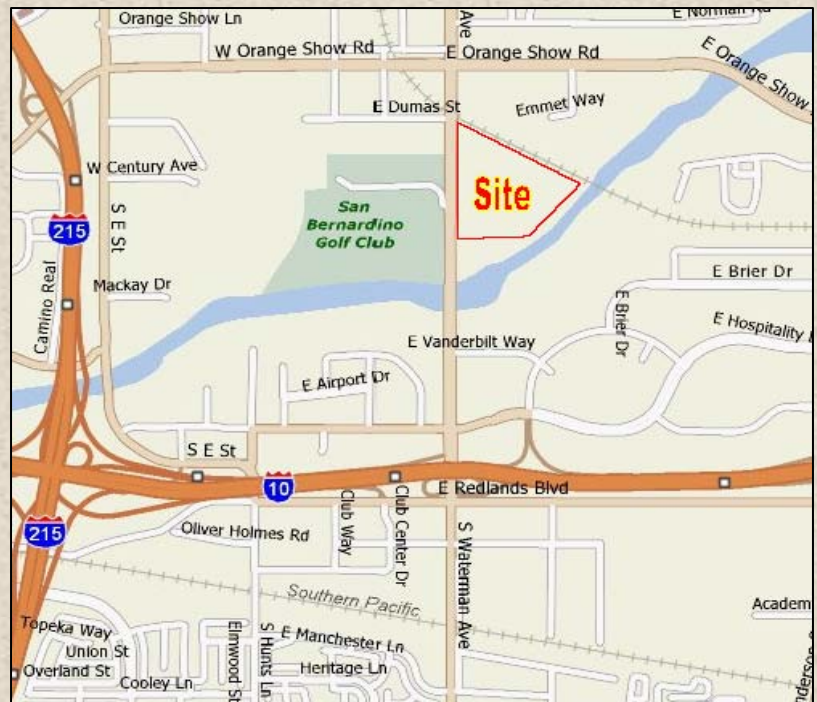
20,673 SF

## Building 9



### PROPERTY FEATURES

- ±20,673 SF Situated on ±0.9 Acres
- ±3,227 SF of Office Space
- Fully Improved Open Office Mezzanine Included
- Zoned IL (Industrial Light)
- Fully Sprinklered
- 24' Clear Height
- 1 Grade Level Loading
- 2 Dock High Loading
- 800 Amp, 480/277 Volt Power Supply
- Easy Access to I-10 and I-215 Freeways
- Immediate Access to Hospitality Lane Amenities
- Located in the SBV Enterprise Zone



[www.watermanbusinesspark.com](http://www.watermanbusinesspark.com)



Herrick Johnson  
951-276-3632  
hjohnson@lee-associates.com

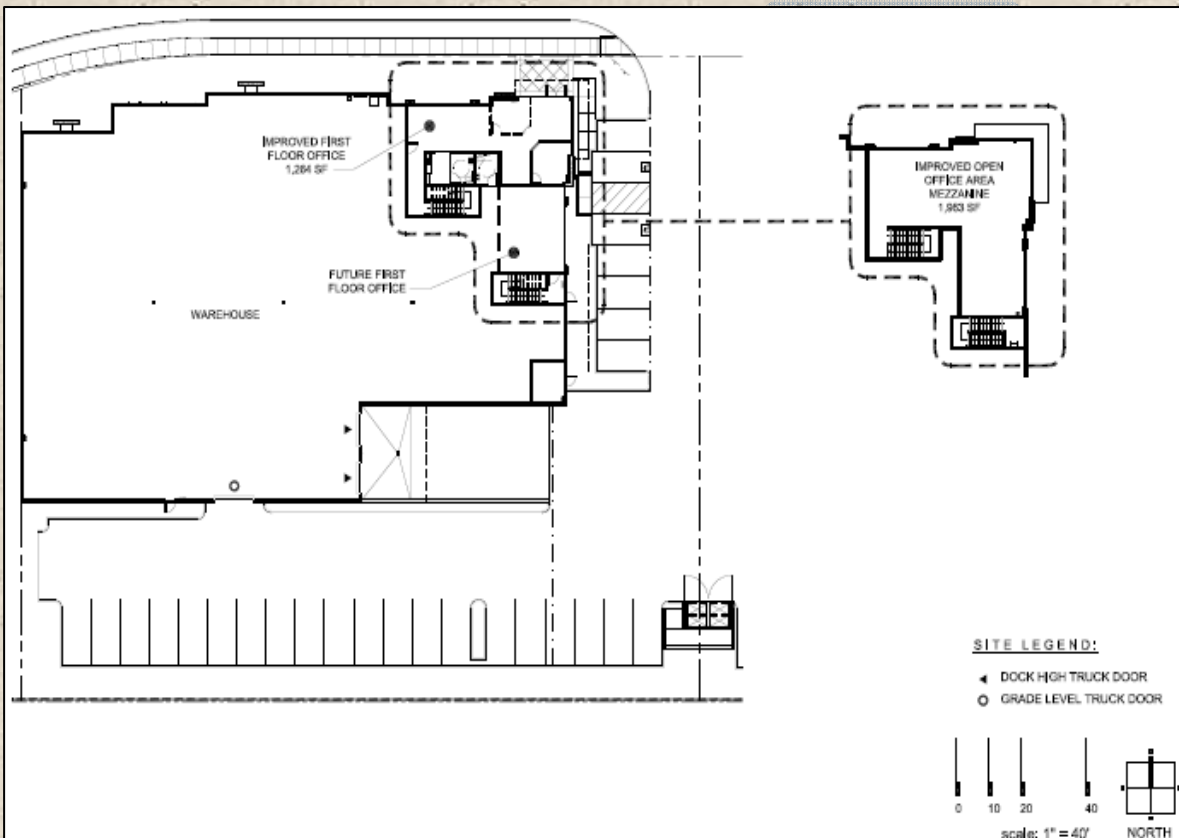
Alexey Zabolotskikh  
951-276-3606  
alex@lee-associates.com



# NEW INDUSTRIAL BUILDING FOR SALE/LEASE

359 E. Parkcenter Circle South • San Bernardino

20,673 SF



Herrick Johnson  
951-276-3632  
hjohnson@lee-associates.com

Alexey Zabolotskikh  
951-276-3606  
alex@lee-associates.com

