

NEW INDUSTRIAL BUILDING FOR SALE/LEASE

410 E. Parkcenter Circle North • San Bernardino

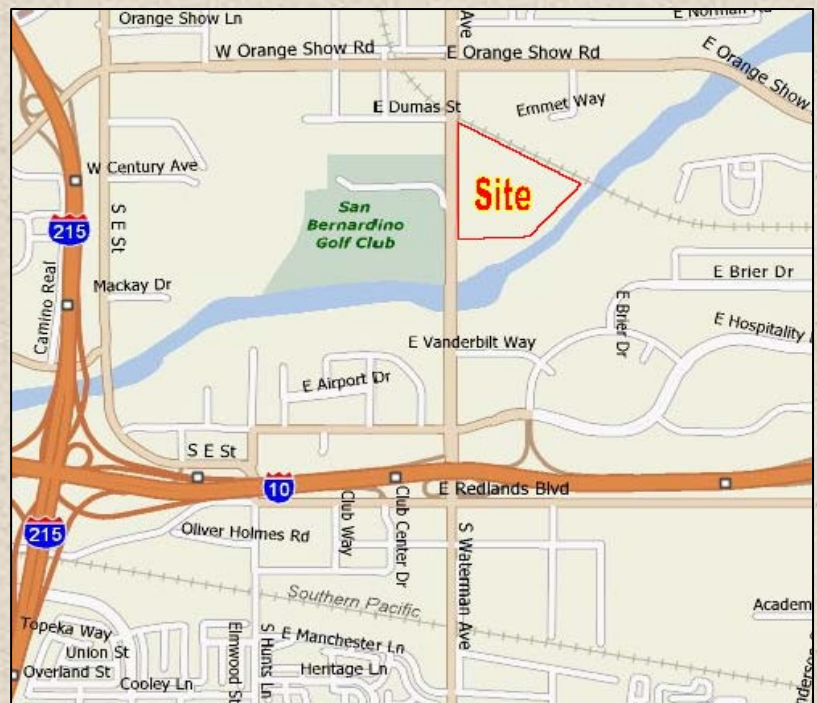
30,331 SF

Building 2



PROPERTY FEATURES

- ±30,331 SF Situated on ±1.3 Acres
- ±4,487 SF of Office Space
- Fully Improved Open Office Mezzanine Included
- Zoned IL (Industrial Light)
- Fully Sprinklered
- 24' Clear Height
- 1 Grade Level Loading
- 2 Dock High Loading
- 800 Amp, 480/277 Volt Power Supply
- Easy Access to I-10 and I-215 Freeways
- Immediate Access to Hospitality Lane Amenities
- Located in the SBV Enterprise Zone



www.watermanbusinesspark.com



Herrick Johnson
951-276-3632
hjohnson@lee-associates.com

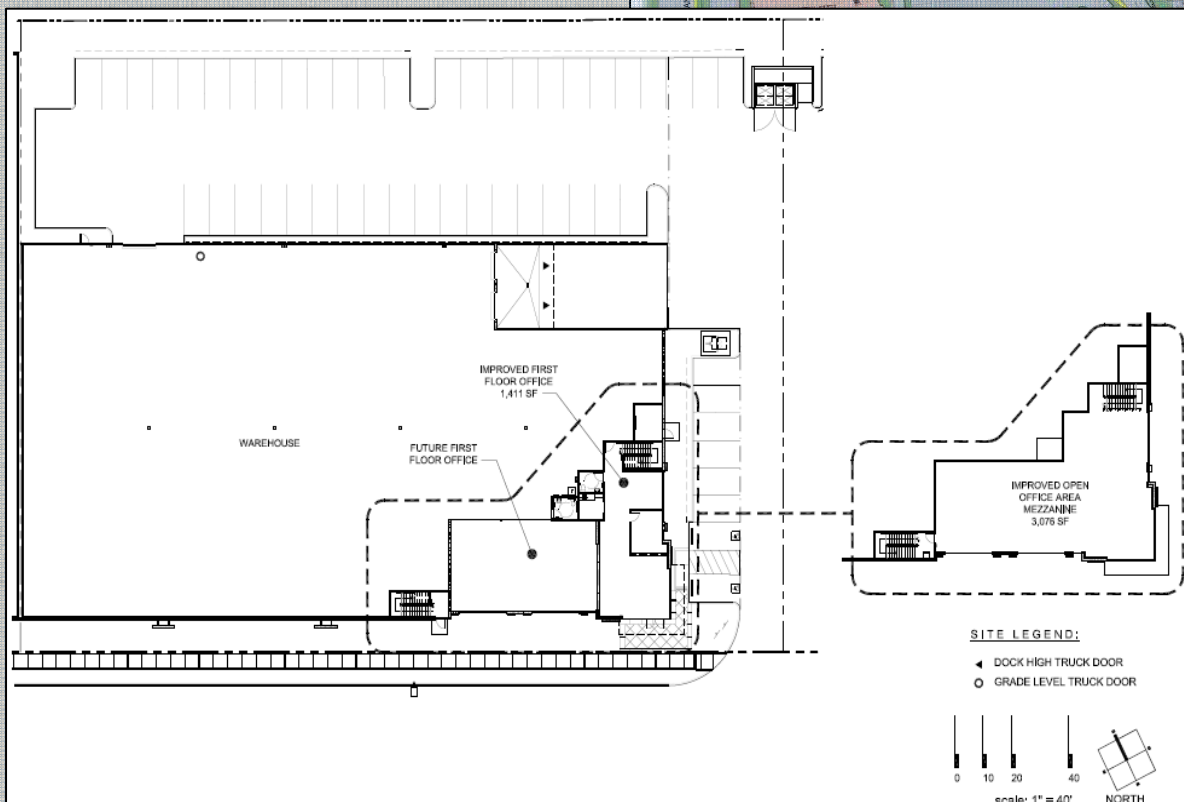
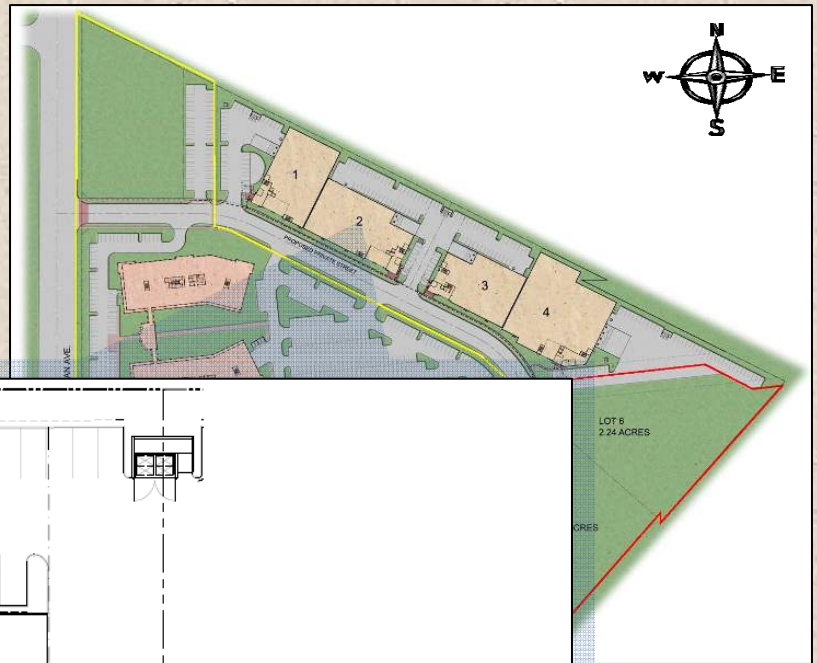
Alexey Zabolotskikh
951-276-3606
alex@lee-associates.com



NEW INDUSTRIAL BUILDING FOR SALE/LEASE

410 E. Parkcenter Circle North • San Bernardino

30,331 SF



For Additional Information, Contact:

Herrick Johnson
951-276-3632
hjohnson@lee-associates.com

Alexey Zabolotskikh
951-276-3606
alex@lee-associates.com

